

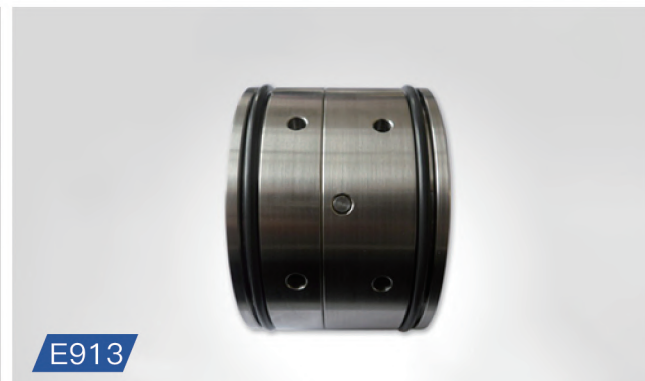
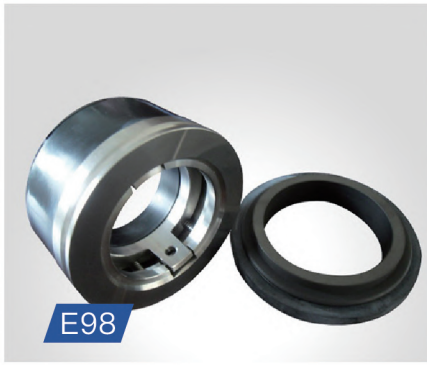
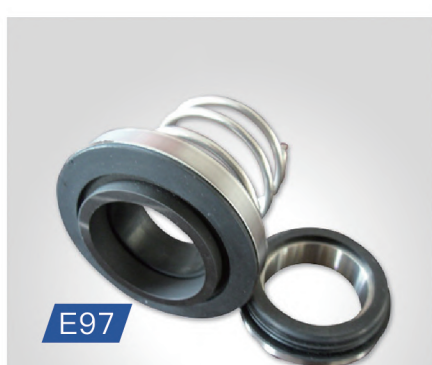
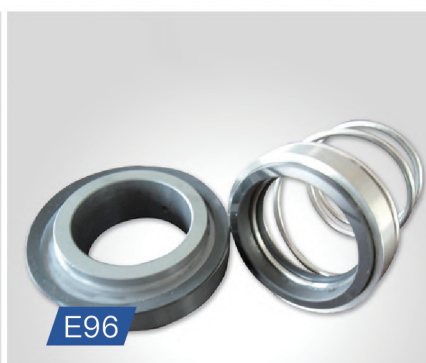
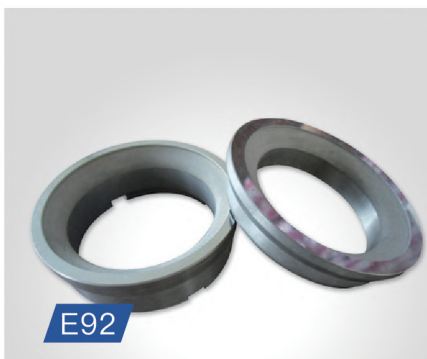
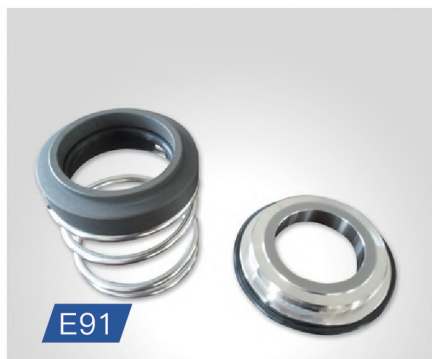


BUSINESS BROCHURES

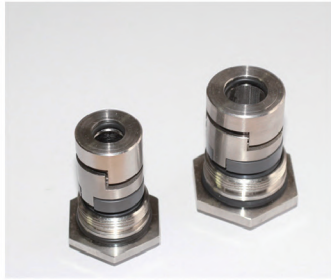
► **MANUFACTURING**
HANGZHOU SEALCON FLUID MACHINERY CO., LTD
FACTORY



O.E.M seals serie



O.E.M seals serie



G19M

Grundfos Pump Model: CR Performance Capabilities

Temperature:
-20°C to 200°C
dependent on the elastomer
Pressure: Up to 25 bar
Speed: Up to 20 m/s
Sizes: 12mm, 16mm, 22mm

Materials Combination

Face: Carbon, SiC, TC
Seat: SiC, TC
O-rings:
NBR, EPDM, VITON, Aflas,
Kalrez, Chemraz etc.
Spring: SS304, SS316
Metal parts: SS304, SS316



G19W

Grundfos Pump Model: CR Performance Capabilities

Temperature:
-20°C to 200°C
dependent on the elastomer
Pressure: Up to 25 bar
Speed: Up to 20 m/s
Sizes: 12mm, 16mm, 22mm

Materials Combination

Face: Carbon, SiC, TC
Seat: SiC, TC
O-rings:
NBR, EPDM, VITON, Aflas,
Kalrez, Chemraz etc.
Spring: SS304, SS316
Metal parts: SS304, SS316



G92

Grundfos Pump Model: CR Performance Capabilities

Temperature:
-20°C to 200°C
dependent on the elastomer
Pressure: Up to 25 bar
Speed: Up to 20 m/s
Sizes: 12mm, 16mm

Materials Combination

Face: Carbon, SiC, TC
Seat: SiC, TC
O-rings:
NBR, EPDM, VITON, Aflas,
Kalrez, Chemraz etc.
Spring: SS304, SS316
Metal parts: SS304, SS316



G93

Grundfos Pump Model: CR Performance Capabilities

Temperature:
-20°C to 200°C
dependent on the elastomer
Pressure: Up to 25 bar
Speed: Up to 20 m/s
Sizes: 12mm

Materials Combination

Face: Carbon, SiC, TC
Seat: SiC, TC
O-rings:
NBR, EPDM, VITON, Aflas,
Kalrez, Chemraz etc.
Spring: SS304, SS316
Metal parts: SS304, SS316



G94

Grundfos Pump Model: CR Performance Capabilities

Temperature:
-20°C to 200°C
dependent on the elastomer
Pressure: Up to 25 bar
Speed: Up to 20 m/s
Sizes: 12mm, 16mm

Materials Combination

Face: Carbon, SiC, TC
Seat: SiC, TC
O-rings:
NBR, EPDM, VITON, Aflas,
Kalrez, Chemraz etc.
Spring: SS304, SS316
Metal parts: SS304, SS316



G95

Grundfos Pump Model: CR Performance Capabilities

Temperature:
-20°C to 200°C
dependent on the elastomer
Pressure: Up to 25 bar
Speed: Up to 20 m/s
Sizes: 22mm

Materials Combination

Face: Carbon, SiC, TC
Seat: SiC, TC
O-rings:
NBR, EPDM, VITON, Aflas,
Kalrez, Chemraz etc.
Spring: SS304, SS316
Metal parts: SS304, SS316



Flygt seals serie



Flygt Pump Model:

FAL-20
2024, 2066, 2075
2101, 3065, 3080



Flygt Pump Model:

FAU-20
2024, 2066, 2075
2101, 3065, 3080



Flygt Pump Model:

FGL-20
3085-91,3085-120,3085-170,3085-171
3085-181,3085-280,3085-290,3085-890



Flygt Pump Model:

FGU-20
3085-91,3085-120,3085-170,3085-171
3085-181,3085-280,3085-290,3085-890



Flygt Pump Model:

FEL-22
2070, 2102-40, 3082



Flygt Pump Model:

FEU-22
2070, 2102-40, 3082



Flygt Pump Model:

FJL-25
3102



Flygt Pump Model:

FJU-25
3102

Flygt seals serie



Flygt Pump Model:
FBL-28
3101



Flygt Pump Model:
FBU-28
3101



Flygt Pump Model:
FKL-35
3126-90, 3126-180
2084, 2135, 2151-10, 2201-10



Flygt Pump Model:
FKU-35
3126-90, 3126-180
3126-91, 3126-280, 3126-290
2084, 2135, 2151-10, 2201-10



Flygt Pump Model:
FML-45
3126-91, 3126-280, 3126-290
3126-181, 3127, 4440, 5530



Flygt Pump Model:
FMU-45
3126-181, 3127, 4440, 5530



Flygt Pump Model:
FOL-45
3140, 3152, 4650, 4660
2201-320, 2201-430, 2201-480, 2201-590, 2201-690



Flygt Pump Model:
FOU-45
3140, 3152, 4650, 4660, Grindex maxi
2201-10, 2201-320, 2201-430, 2201-480, 2201-590, 2201-690
2201-11HT or MT, 2201-11LT



Flygt seals serie



Flygt Pump Model:

FPL-60
3200, 2250, 2290



Flygt Pump Model:

FPU-60
3200, 2250, 2290



Flygt Pump Model:

FQL-60
3170, 3201, 4410, 4430
4670, 4680, 7045, 600



Flygt Pump Model:

FSL-80
3230, 3300-91, 3300-181, 3300-280
3300-980, 3305, 3310, 3311, 3312, 3350
3351, 3355, 3356, 3357, 3500, 3501, 3530
3531, 3600, 3601, 3602, 7050, 7051....



Flygt Pump Model:

FSU-90
3230, 3300-91, 3300-181, 3300-280,
3300-980, 3305, 3310, 3311, 3312, 3350
3351, 3355, 3356, 3357, 3500, 3501, 3530
3531, 3600, 3601, 3602, 7050, 7051....



Flygt Pump Model:

new flygt
20mm, 22mm, 25mm, 28mm, 35mm
are available



Flygt Pump Model:

plug in metal



Flygt Pump Model:

plug in plastic

3230, 3300-91, 3300-181, 3300-280, 3300-980, 3305, 3310, 3311, 3312, 3350 3351, 3355, 3356, 3357, 3500, 3501, 3530, 3531, 3600, 3601, 3602, 7050, 7051
7055, 7060, 7061, 7076, 7556, 7080, 7115, 7570, 7585, 605, 615, 665, 670, 680 705, 715, 720, 721, 735, 745, 760, 765, 770, 775, 820, 840, 841, 860, 880, 881, 900

metal bellow seals serie



M13

Performance Capabilities

Temperature: -75°C to 200°C
Pressure: Up to 20 bar
Speed: Up to 23 m/s
End play/axial float allowance:
 $\pm 0.1\text{mm}$
Sizes: 0.75" to 4"

Materials Combination

Face: Carbon, SiC, TC
Seat: Ceramic, SiC, TC
O-rings:
NBR, EPDM, VITON, Aflas, FEP, Kalrez,
Chemraz, Grofoil etc.
Spring: SS316, hastelloy C, AM350
Metal parts: SS316, hastelloy C



M14

Performance Capabilities

Temperature: -75°C to 200°C
Pressure: Up to 20 bar
Speed: Up to 23 m/s
End play/axial float allowance:
 $\pm 0.1\text{mm}$
Sizes: 18mm to 150mm 0.75" to 7"

Materials Combination

Face: Carbon, SiC, TC
Seat: Ceramic, SiC, TC
O-rings:
NBR, EPDM, VITON, Aflas, FEP, Kalrez
Chemraz, Grofoil etc.
Spring: SS316, hastelloy C, AM350
Metal parts: SS316, hastelloy C



M15

Performance Capabilities

Temperature: -75°C to 200°C
Pressure: Up to 20 bar
Speed: Up to 23 m/s
End play/axial float allowance:
 $\pm 0.1\text{mm}$
Sizes: 18mm to 150mm 0.75" to 7"

Materials Combination

Face: Carbon, SiC, TC
Seat: Ceramic, SiC, TC
O-rings:
NBR, EPDM, VITON, Aflas, FEP, Kalrez
Chemraz, Grofoil etc.
Spring: SS316, hastelloy C, AM350
Metal parts: SS316, hastelloy C



M16

Performance Capabilities

Temperature: -75°C to 200°C
Pressure: Up to 20 bar
Speed: Up to 23 m/s
End play/axial float allowance:
 $\pm 0.1\text{mm}$
Sizes: 18mm to 150mm 0.75" to 7"

Materials Combination

Face: Carbon, SiC, TC
Seat: Ceramic, SiC, TC
O-rings:
NBR, EPDM, VITON, Aflas, FEP, Kalrez
Chemraz, Grofoil etc.
Spring: SS316, hastelloy C, AM350
Metal parts: SS316, hastelloy C



M17

Performance Capabilities

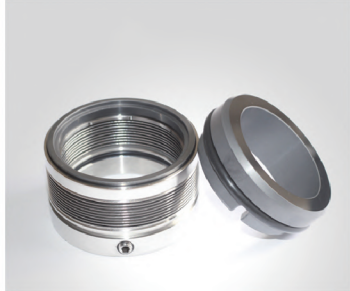
Temperature: -40°C to 220°C
Pressure: Up to 25 bar
Speed: Up to 20 m/s
End play/axial float allowance:
 $\pm 0.1\text{mm}$
Sizes: 18mm to 100mm 0.75" to 4"

Materials Combination

Face: Carbon, SiC, TC
Seat: Ceramic, SiC, TC
O-rings:
NBR, EPDM, VITON, Aflas, FEP, Kalrez
Chemraz, Grofoil etc.
Spring: SS316, hastelloy C, AM350
Metal parts: SS316, hastelloy C



metal bellow seals serie



M21

Performance Capabilities

Temperature: -40°C to 220°C
 Pressure: Up to 25 bar
 Speed: Up to 20 m/s
 End play/axial float allowance:
 ±0.1mm
 Sizes: 16mm to 100mm

Materials Combination

Face: Carbon, SiC, TC
 Seat: Ceramic, SiC, TC
 O-rings:
 NBR, EPDM, VITON, Aflas, FEP, Kalrez,
 Chemraz, Grofoil etc.
 Spring: SS316, hastelloy C, AM350
 Metal parts: SS316, hastelloy C



M22

Performance Capabilities

Temperature: -75°C to 200°C
 Pressure: Up to 20 bar (double plate)
 Up to 60 bar (single plate)
 Speed: Up to 23 m/s
 End play/axial float allowance:
 ±0.1mm
 Sizes: 16mm to 100mm

Materials Combination

Face: Carbon, SiC, TC
 Seat: Ceramic, SiC, TC
 O-rings:
 NBR, EPDM, VITON, Aflas, FEP, Kalrez,
 Chemraz, Grofoil etc.
 Spring: SS316, hastelloy C, AM350
 Metal parts: SS316, hastelloy C



T11

Performance Capabilities

Temperature: 120°C max.
 Pressure: Up to 0.5 bar
 Speed: Up to 10 m/s
 End play/axial float allowance:
 ±0.1mm
 Sizes: 16mm to 100mm 0.75" to 4"

Materials Combination

Face: PTFE glassfibre, Carbon, SiC, TC
 Seat: Ceramic, SiC, TC
 Bellow: PTFE
 Spring: SS316, hastelloy C
 Metal parts: SS304, SS316



T12

Performance Capabilities

Temperature: 120°C max.
 Pressure: Up to 0.5 bar
 Speed: Up to 10 m/s
 End play/axial float allowance:
 ±0.1mm
 Sizes: 16mm to 100mm 0.75" to 4"

Materials Combination

Face: PTFE glassfibre, Carbon, SiC, TC
 Seat: Ceramic, SiC, TC
 Bellow: PTFE
 Spring: SS316, hastelloy C
 Metal parts: SS304, SS316



T91

Performance Capabilities

Temperature: -40°C to 220°C
 Pressure: Up to 25 bar
 Speed: Up to 20 m/s
 End play/axial float allowance:
 ±0.1mm
 Sizes: 25mm to 65mm 1" to 2 3/8"

Materials Combination

Face: Carbon, SiC, TC
 Seat: Ceramic, SiC, TC
 O-rings:
 NBR, EPDM, VITON, Aflas, FEP, Kalrez,
 Chemraz, Grofoil etc.
 Spring: SS316, hastelloy C, AM350
 Metal parts: SS316, hastelloy C

rubber bellow seals serie



R11

Performance Capabilities

Temperature: -20°C to 150°C
dependent on the elastomer
Pressure: Up to 10 bar
Speed: Up to 12 m/s
End play/axial float allowance:
 $\pm 0.1\text{mm}$
Sizes: 5/8" to 4"

Materials Combination

Face: Carbon, SiC, TC
Seat: Ceramic, SiC, TC
Bellow: NBR, EPDM, VITON etc.
Spring: SS304, SS316
Metal parts: SS304, SS316



R12

Performance Capabilities

Temperature: -20°C to 200°C
dependent on the elastomer
Pressure: Up to 5 bar
Speed: Up to 12 m/s
End play/axial float allowance:
 $\pm 0.1\text{mm}$
Sizes: 3/8", 1/2", 5/8", 3/4", 7/8", 1"

Materials Combination

Face: Carbon, SiC, TC
Seat: Ceramic, SiC, TC
Bellow: NBR, EPDM, VITON etc.
Spring: SS304, SS316
Metal parts: SS304, SS316



R14

Performance Capabilities

Temperature: -30°C to 200°C
dependent on the elastomer
Pressure: Up to 12 bar
Speed: Up to 12 m/s
End play/axial float allowance:
 $\pm 0.1\text{mm}$
Sizes: 16mm to 100mm 5/8" to 2.5"

Materials Combination

Face: Carbon, SiC, TC
Seat: Ceramic, SiC, TC
Bellow: NBR, EPDM, VITON etc.
Spring: SS304, SS316
Metal parts: SS304, SS316



R15 R16 R17

Performance Capabilities

Temperature: -40°C to 150°C
dependent on the elastomer
Pressure: Up to 12 bar
Speed: Up to 13 m/s
End play/axial float allowance:
 $\pm 0.1\text{mm}$
Sizes: 10mm to 100mm 3/8" to 4"

Materials Combination

Face: Carbon, SiC, TC
Seat: Ceramic, SiC, TC
Bellow: NBR, EPDM, VITON etc.
Spring: SS304, SS316
Metal parts: SS304, SS316



R18

Performance Capabilities

Temperature: -20°C to 150°C
dependent on the elastomer
Pressure: Up to 25 bar
Speed: Up to 20 m/s
End play/axial float allowance:
 $\pm 0.1\text{mm}$
Sizes: 16mm to 100mm

Materials Combination

Face: Carbon, SiC, TC
Seat: Ceramic, SiC, TC
Bellow: NBR, EPDM, VITON etc.
Spring: SS304, SS316
Metal parts: SS304, SS316



R19

Performance Capabilities

Temperature: -20°C to 150°C
dependent on the elastomer
Pressure: Up to 8 bar
Speed: Up to 10 m/s
End play/axial float allowance:
 $\pm 0.1\text{mm}$
Sizes: 14mm to 100mm

Materials Combination

Face: Carbon, SiC, TC
Seat: Ceramic, SiC, TC
Bellow: NBR, EPDM, VITON etc.
Spring: SS304, SS316
Metal parts: SS304, SS316



rubber bellow seals serie



R20 R21 R22 R23

Performance Capabilities

Temperature: -30°C to 200°C
 dependent on the elastomer
 Pressure: Up to 12 bar
 Speed: Up to 12 m/s
 End play/axial float allowance:
 ±0.1mm
 Sizes: 10mm to 100mm

Materials Combination

Face: Carbon, SiC, TC
 Seat: Ceramic, SiC, TC
 Bellow: NBR, EPDM, VITON etc.
 Spring: SS304, SS316
 Metal parts: SS304, SS316



R24

Performance Capabilities

Temperature: -20°C to 150°C
 dependent on the elastomer
 Pressure: Up to 8 bar
 Speed: Up to 10 m/s
 End play/axial float allowance:
 ±0.1mm
 Sizes: 8mm to 50mm 3/8" to 2"

Materials Combination

Face: Carbon, SiC, TC
 Seat: Ceramic, SiC, TC
 Bellow: NBR, EPDM, VITON etc.
 Spring: SS304, SS316
 Metal parts: SS304, SS316



R26

Performance Capabilities

Temperature: -20°C to 100°C
 dependent on the elastomer
 Pressure: Up to 5 bar
 Speed: Up to 10 m/s
 End play/axial float allowance:
 ±0.1mm
 Sizes: 6mm to 70mm

Materials Combination

Face: Carbon, SiC, TC
 Seat: Ceramic, SiC, TC
 Bellow: NBR, EPDM, VITON etc.
 Spring: SS304, SS316
 Metal parts: SS304, SS316



R91

Performance Capabilities

Temperature: -20°C to 150°C
 dependent on the elastomer
 Pressure: Up to 8 bar
 Speed: Up to 10 m/s
 End play/axial float allowance:
 ±0.1mm
 Sizes: 14mm to 90mm

Materials Combination

Face: Carbon, SiC, TC
 Seat: Ceramic, SiC, TC
 Bellow: NBR, EPDM, VITON etc.
 Spring: SS304, SS316
 Metal parts: SS304, SS316



R92

Performance Capabilities

Temperature: -20°C to 150°C
 dependent on the elastomer
 Pressure: Up to 8 bar
 Speed: Up to 10 m/s
 End play/axial float allowance:
 ±0.1mm
 Sizes: 10mm to 75mm 3/8" to 3"

Materials Combination

Face: Carbon, SiC, TC
 Seat: Ceramic, SiC, TC
 Bellow: NBR, EPDM, VITON etc.
 Spring: SS304, SS316
 Metal parts: SS304, SS316



R93

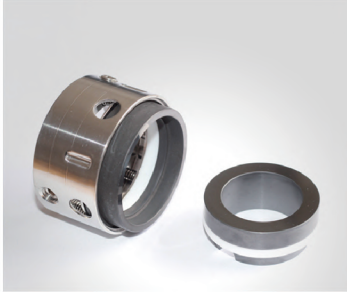
Performance Capabilities

Temperature: -20°C to 150°C
 dependent on the elastomer
 Pressure: Up to 8 bar
 Speed: Up to 10 m/s
 End play/axial float allowance:
 ±0.1mm
 Sizes: 10mm to 100mm

Materials Combination

Face: Carbon, SiC, TC
 Seat: Ceramic, SiC, TC
 Bellow: NBR, EPDM, VITON etc.
 Spring: SS304, SS316
 Metal parts: SS304, SS316

o-ring seals serie



N11 N15

Performance Capabilities

Temperature: -100°C to 400°C
Pressure: Up to 10 bar
(unbalance type)
Speed: Up to 20 m/s
End play/axial float allowance:
 $\pm 0.1\text{mm}$
Sizes: 14mm to 100mm 0.5" to 4"

Materials Combination

Face: Carbon, SiC, TC
Seat: Ceramic, SiC, TC
O-rings: PTFE
Spring: SS304, SS316, hastelloy C
Metal parts: SS304, SS316



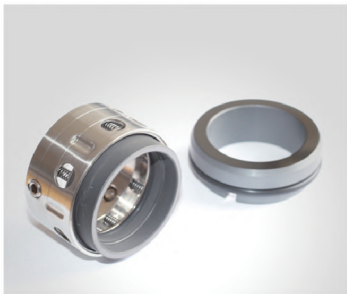
N12 N16

Performance Capabilities

Temperature: -50°C to 400°C
Pressure: Up to 25 bar
(balance type)
Speed: Up to 20 m/s
End play/axial float allowance:
 $\pm 0.1\text{mm}$
Sizes: 5/8" to 4" 14mm to 100mm

Materials Combination

Face: Carbon, SiC, TC
Seat: Ceramic, SiC, TC
O-rings: PTFE
Spring: SS304, SS316, hastelloy C
Metal parts: SS304, SS316



N13

Performance Capabilities

Temperature: -40°C to 200°C
depend on o-ring material
Pressure: Up to 10 bar
(unbalance type)
Speed: Up to 20 m/s
End play/axial float allowance:
 $\pm 0.1\text{mm}$
Sizes: 14mm to 100mm

Materials Combination

Face: Carbon, SiC, TC
Seat: Ceramic, SiC, TC
O-rings:
NBR, EPDM, VITON, Aflas, FEP, Kalrez
Chemraz etc.
Spring: SS304, SS316, hastelloy C
Metal parts: SS304, SS316



N14

Performance Capabilities

Temperature: -40°C to 200°C
depend on o-ring material
Pressure: Up to 25 bar
(unbalance type)
Speed: Up to 20 m/s
End play/axial float allowance:
 $\pm 0.1\text{mm}$
Sizes: 14mm to 100mm

Materials Combination

Face: Carbon, SiC, TC
Seat: Ceramic, SiC, TC
O-rings:
NBR, EPDM, VITON, Aflas, FEP, Kalrez
Chemraz etc.
Spring: SS304, SS316, hastelloy C
Metal parts: SS304, SS316



N21

Performance Capabilities

Temperature: -20°C to 180°C
depend on o-ring material
Pressure: Up to 25 bar
Speed: Up to 35 m/s
End play/axial float allowance:
 $\pm 0.1\text{mm}$
Sizes: 15mm to 100mm

Materials Combination

Face: Carbon, SiC, TC
Seat: Ceramic, SiC, TC
O-rings:
NBR, EPDM, VITON, Aflas, FEP, Kalrez
Chemraz etc.
Spring: SS304, SS316, hastelloy C
Metal parts: SS304, SS316



o-ring seals serie



N24

Performance Capabilities

Temperature: -20°C to 180°C
depend on o-ring material
Pressure: Up to 10 bar
Speed: Up to 10 m/s
End play/axial float allowance:
 $\pm 0.1\text{mm}$
Sizes: 10mm to 80mm

Materials Combination

Face: Carbon, SiC, TC
Seat: Ceramic, SiC, TC
O-rings:
NBR, EPDM, VITON, Aflas, FEP, Kalrez
Chemraz etc.
Spring: SS304, SS316
Metal parts: SS304, SS316



N25

Performance Capabilities

Temperature: -30°C to 200°C
depend on o-ring material
Pressure: Up to 12 bar
(balance type)
Speed: Up to 18 m/s
End play/axial float allowance:
 $\pm 0.1\text{mm}$
Sizes: 14mm to 100mm

Materials Combination

Face: Carbon, SiC, TC
Seat: Ceramic, SiC, TC
O-rings:
NBR, EPDM, VITON, Aflas, FEP, Kalrez
Chemraz etc.
Spring: SS304, SS316, Hastelloy
Metal parts: SS304, SS316



N29 N210

Performance Capabilities

Temperature: -30°C to 200°C
depend on o-ring material
Pressure: Up to 25 bar
(unbalance type)
Speed: Up to 18 m/s
End play/axial float allowance:
 $\pm 0.1\text{mm}$
Sizes: 14mm to 95mm

Materials Combination

Face: Carbon, SiC, TC
Seat: Ceramic, SiC, TC
O-rings:
NBR, EPDM, VITON, Aflas, FEP, Kalrez
Chemraz etc.
Spring: SS304, SS316, Hastelloy
Metal parts: SS304, SS316



N41

Performance Capabilities

Temperature: -30°C to 200°C
depend on o-ring material
Pressure: Up to 10 bar
Speed: Up to 10 m/s
End play/axial float allowance:
 $\pm 0.1\text{mm}$
Sizes: 8mm to 100mm

Materials Combination

Face: Carbon, SiC, TC
Seat: Ceramic, SiC, TC
O-rings:
NBR, EPDM, VITON, Aflas, FEP, Kalrez
Chemraz etc.
Spring: SS304, SS316, Hastelloy
Metal parts: SS304, SS316



N42

Performance Capabilities

Temperature: -30°C to 200°C
depend on o-ring material
Pressure: Up to 10 bar
Speed: Up to 10 m/s
End play/axial float allowance:
 $\pm 0.1\text{mm}$
Sizes: 8mm to 100mm

Materials Combination

Face: Carbon, SiC, TC
Seat: Ceramic, SiC, TC
O-rings:
NBR, EPDM, VITON, Aflas, FEP, Kalrez
Chemraz etc.
Spring: SS304, SS316, hastelloy C
Metal parts: SS304, SS316

o-ring seals serie



N43 N44

Performance Capabilities

Temperature: -30°C to 200°C
depend on o-ring material
Pressure: Up to 8 bar
Speed: Up to 10 m/s
End play/axial float allowance:
 $\pm 1\text{mm}$
Sizes: 10mm to 40mm

Materials Combination

Face: Ceramic, SiC, TC
Seat: Carbon, SiC, TC
O-rings: NBR, EPDM, VITON, Aflas, FEP, Kalrez
Chemraz etc
Spring: SS304, SS316
Metal parts: SS304, SS316



N47

Performance Capabilities

Temperature: -20°C to 200°C
depend on o-ring material
Pressure: Up to 8 bar
Speed: Up to 10 m/s
End play/axial float allowance:
 $\pm 1\text{mm}$
Sizes: 10mm to 40mm

Materials Combination

Face: Ceramic, SiC, TC
Seat: Carbon, SiC, TC
O-rings: NBR, EPDM, VITON, Aflas, FEP, Kalrez
Chemraz etc
Spring: SS304, SS316
Metal parts: SS304, SS316



N71

Performance Capabilities

Temperature: -20°C to 180°C
depend on o-ring material
Pressure: Up to 16 bar
Speed: Up to 15 m/s
End play/axial float allowance:
 $\pm 1\text{mm}$
Sizes: 16mm to 200mm 0.75" to 8"

Materials Combination

Face: Carbon, SiC, TC
Seat: Ceramic, SiC, TC
O-rings: NBR, EPDM, VITON, Aflas, FEP, Kalrez
Chemraz etc
Spring: SS304, SS316, hastelloy C
Metal parts: SS304, SS316



N91

Performance Capabilities

Temperature: -20°C to 180°C
depend on o-ring material
Pressure: Up to 10 bar
Speed: Up to 10 m/s
End play/axial float allowance:
 $\pm 1\text{mm}$
Sizes: 18mm to 100mm

Materials Combination

Face: Carbon, SiC, TC
Seat: Ceramic, SiC, TC
O-rings:
NBR, EPDM, VITON, Aflas, FEP, Kalrez
Chemraz etc.
Spring: SS304, SS316,
Metal parts: SS304, SS316



N213

Performance Capabilities

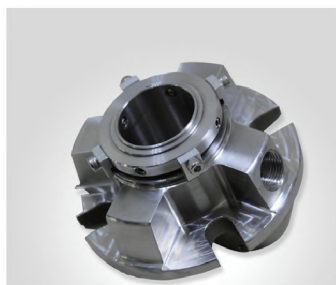
Temperature: -20°C to 200°C
depend on o-ring material
Pressure: Up to 25 bar
Speed: Up to 15 m/s
End play/axial float allowance:
 $\pm 1\text{mm}$
Sizes: 18mm to 100mm

Materials Combination

Face: Carbon, SiC, TC
Seat: Ceramic, SiC, TC
O-rings:
NBR, EPDM, VITON, Aflas, FEP, Kalrez
Chemraz etc.
Spring: SS304, SS316,
Metal parts: SS304, SS316



single cartridge seals serie



S11

Performance Capabilities

Temperature: -30°C to 250°C
 dependent on the elastomer
 Pressure: Up to 75mm/3.0"
 21 bar g/300 psig max. 75mm/3.0" and over
 13 bar g/200 psig max.
 Speed: Up to 25 m/s
 End play/axial float allowance:
 0.13mm/0.005"

Run out/out of squareness:
 0.05mm/0.002"

Sizes: 10mm to 100mm

Materials Combination

Face: Carbon, SiC, TC
 Seat: Ceramic, SiC, TC
 Bellow: NBR, EPDM, VITON etc.
 Spring: SS304, SS316
 Metal parts: SS304, SS316



S15

Performance Capabilities

Temperature: Up to 120°C
 dependent on the elastomer
 Pressure: Up to 15 bar g/215 psig max.
 Speed: Up to 20 m/s
 End play/axial float allowance:
 0.13mm/0.005"
 Run out/out of squareness:
 0.05mm/0.002"

Sizes: 30mm, 40mm, 50mm
 60mm, 80mm, 90mm, 100mm

Materials Combination

Face: Carbon, SiC, TC
 Seat: Ceramic, SiC, TC
 Bellow: NBR, EPDM, VITON etc.
 Spring: SS304, SS316
 Metal parts: SS304, SS316



S16

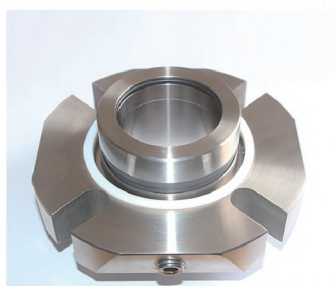
Performance Capabilities

Temperature: Up to 120°C
 dependent on the elastomer
 Pressure: Up to 15 bar g/215 psig max.
 Speed: Up to 20 m/s
 End play/axial float allowance:
 0.13mm/0.005"
 Run out/out of squareness:
 0.05mm/0.002"

Sizes: 30mm, 40mm, 50mm
 60mm

Materials Combination

Face: Carbon, SiC, TC
 Seat: Ceramic, SiC, TC
 Bellow: NBR, EPDM, VITON etc.
 Spring: SS304, SS316
 Metal parts: SS304, SS316



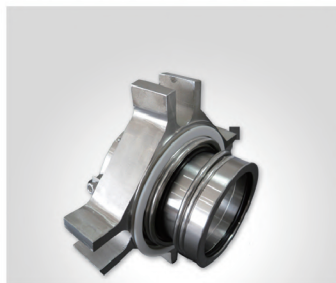
S21

Performance Capabilities

Temperature: -40°C to 220°C
 dependent on the elastomer
 Pressure: Up to 25 bar
 Speed: Up to 25 m/s
 End play/axial float allowance:
 ±1.0mm
 Sizes: 25mm to 100mm 1" to 4"

Materials Combination

Face: Carbon, SiC, TC
 Seat: SiC, TC
 O-rings:
 NBR, EPDM, VITON, Aflas, FEP, Kalrez
 Chemraz etc.
 Spring: SS316, hastelloy C
 Metal parts: SS316



S22

Performance Capabilities

Temperature: -40°C to 220°C
 dependent on the elastomer
 Pressure: Up to 25 bar
 Speed: Up to 25 m/s
 End play/axial float allowance:
 ±1.0mm
 Sizes: 125mm to 75mm 1" to 2.625"

Materials Combination

Face: Carbon, SiC, TC
 Seat: SiC, TC
 O-rings:
 NBR, EPDM, VITON, Aflas, FEP, Kalrez
 Chemraz etc.
 Spring: SS316, hastelloy C
 Metal parts: SS316



S51

Performance Capabilities

Temperature: -40°C to 220°C
 dependent on the elastomer
 Pressure: Up to 28 bar
 Speed: Up to 35 m/s
 End play/axial float allowance:
 ±1.0mm
 Sizes: 24mm to 100mm 1" to 4"

Materials Combination

Face: Carbon, SiC, TC
 Seat: SiC, TC
 O-rings:
 NBR, EPDM, VITON, Aflas, FEP, Kalrez
 Chemraz etc.
 Spring: SS316, hastelloy C
 Metal parts: SS316

double cartridge seals serie



D11

Performance Capabilities

Temperature: -20°C to 200°C
dependent on the elastomer
Pressure: Up to 15 bar
Speed: Up to 20 m/s
End play/axial float allowance:
 $\pm 1.0\text{mm}$
Sizes: 30mm, 40mm, 50mm, 60mm
80mm, 90mm, 100mm

Materials Combination

Face: Carbon, SiC, TC
Seat: SiC, TC
O-rings:
NBR, EPDM, VITON, Aflas, FEP, Kalrez
Chemraz etc.
Spring: SS316, hastelloy C
Metal parts: SS316



D13

Performance Capabilities

Temperature: -20°C to 200°C
dependent on the elastomer
Pressure: Up to 15 bar
Speed: Up to 20 m/s
End play/axial float allowance:
 $\pm 1.0\text{mm}$
Sizes: 45mm, 58mm, 77mm, 108mm

Materials Combination

Face: Carbon, SiC, TC
Seat: SiC, TC
O-rings:
NBR, EPDM, VITON, Aflas, FEP, Kalrez
Chemraz etc.
Spring: SS316, hastelloy C
Metal parts: SS316



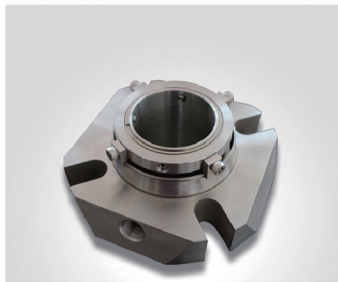
D16

Performance Capabilities

Temperature: -20°C to 200°C
dependent on the elastomer
Pressure: Up to 15 bar
Speed: Up to 20 m/s
End play/axial float allowance:
 $\pm 1.0\text{mm}$
Sizes: 30mm, 40mm, 50mm, 60mm

Materials Combination

Face: Carbon, SiC, TC
Seat: SiC, TC
O-rings:
NBR, EPDM, VITON, Aflas, FEP, Kalrez
Chemraz etc.
Spring: SS316, hastelloy C
Metal parts: SS316



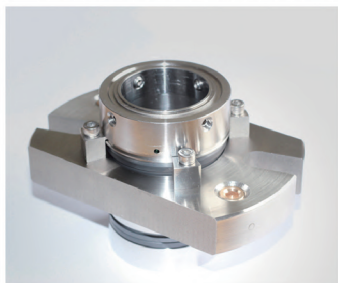
D21

Performance Capabilities

Temperature: -20°C to 250°C
dependent on the elastomer
Pressure: Up to 25 bar
Speed: Up to 25 m/s
End play/axial float allowance:
 $\pm 1.0\text{mm}$
Sizes: 25mm to 100mm 1" to 4"

Materials Combination

Face: Carbon, SiC, TC
Seat: SiC, TC
O-rings:
NBR, EPDM, VITON, Aflas, FEP, Kalrez
Chemraz etc.
Spring: SS316, hastelloy C
Metal parts: SS316



D51

Performance Capabilities

Temperature: -40°C to 250°C
dependent on the elastomer
Pressure: Up to 28 bar
Speed: Up to 35 m/s
End play/axial float allowance:
 $\pm 1.0\text{mm}$
Sizes: 24mm to 100mm 1" to 4"

Materials Combination

Face: Carbon, SiC, TC
Seat: SiC, TC
O-rings:
NBR, EPDM, VITON, Aflas, FEP, Kalrez
Chemraz etc.
Spring: SS316, hastelloy C
Metal parts: SS316



D53

Performance Capabilities

Temperature: -40°C to 250°C
dependent on the elastomer
Pressure: Up to 28 bar
Speed: Up to 25 m/s
End play/axial float allowance:
 $\pm 1.0\text{mm}$
Sizes: 50mm to 200mm 2" to 7.875"

Materials Combination

Face: Carbon, SiC, TC
Seat: SiC, TC
O-rings:
NBR, EPDM, VITON, Aflas, FEP, Kalrez
Chemraz etc.
Spring: SS316, hastelloy C
Metal parts: SS316